



Alchemy Project - Milton Keynes for Shepherd Construction Limited Completed October 2007

Solex HALO-400-65 elliptical profile solar shading blades we used on this project to create an impressive feature shading structure to the front elevation of this office development by Shepherd Construction.

The solar blades span 6.0m steel grid centres at 425mm horizontal pitch and are inclined at 30 degrees with blade ends secured to structural steelwork using profile cut aluminum plate/angle rafter sections.



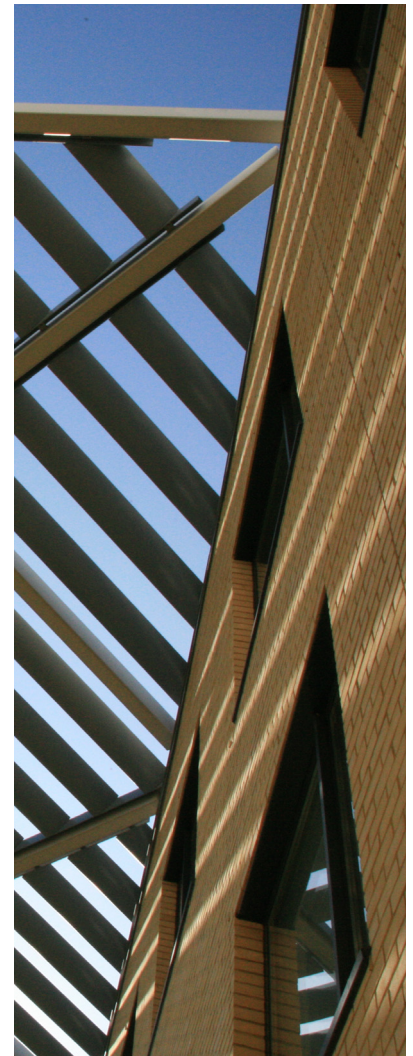
Design calculations were prepared to the latest British Standard Code of Practice for structural use of Aluminium in Buildings.

The contract programme was 8 weeks from receipt of order and completion of all works on site which was critical to ensure any delays to extensive groundworks below our work areas was avoided.

The working height was 16.0m from ground level with all works carried out using a combination of scissor lift and cherry picker motorised plant access.

The system was supplied with a metallic silver PPC finish to all aluminum components.

This project was completed successfully by Solinear through dedicated and responsive project management resources and also the skills and commitment of its directly employed site fixing teams.



Contract Particulars

Value: £85,000

Contract Period: 8 weeks

Client: Shepherd Const'n
York
North Yorkshire

Site: Alchemy Project
Milton Keynes

Date: October 2007

Solinear Limited

Unit 9 Brunel Park Industrial Estate, Blyth Road, Harworth, Doncaster. DN11 8NE
Tel: 01302 759700 Fax: 01302 759711 email: mail@solinear.co.uk