

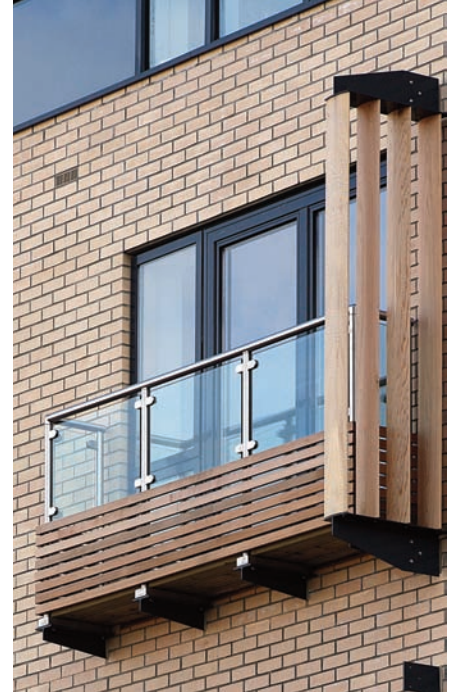
Sustainable Timbers to provide effective Solar Shading and Screening Solutions



Medera - Wood Louvres

The Solinear Solex-Medera product range offers the natural beauty and character of timber for sustainable solar shading solutions are now available from Solinear. Western Red Cedar is the most common timber used within our system and offers robust and stable shading blades to provide a modern, stylish and contemporary appearance to the building facade.

Timber blades can be supplied as rectangular planks ranging in size from 100x20mm blades up to 290x45mm wide. Elliptical and other geometric shapes may also be designed and supplied to suit client requirements dependant upon final technical review from our engineers.



A moveable option is available to provide a dynamic shading structure or louvre screening system and ensure optimum system performances where required.

The Solex-Medera product range can also be used for ventilation or plant louvre screening with standard vertical pitches of 100mm and 150mm available. Blades fixed between extruded aluminium clamp sets for a secure and precise product.



www.solinear.co.uk

Unit 9 Brunel Park Ind. Est.,
Blyth Road, Harworth
Doncaster. DN11 8NE

T: 01302 759700
F: 01302 759711
e: mail@solinear.co.uk

