



New Council Headquarters - Runnymede for Melayway Glass Assemblies Completed April 2007

Solinear was awarded this difficult and design challenging project following an extensive design appraisal by the client Melayway Glass Assemblies Limited.

The work scope required complex 3D modelling to be undertaken by our design engineers to establish complicated fabrication geometry for the trapezoidal horizontal and diagonally vertical shading structures required to the 6 no off light 'pods' features to the building perimeter.

The HALO-400-65 'one-piece' elliptical blade profile was used to span the 6.0m shading support steels to the roof area. This blade profile was to be fitted at an angle of 45 degrees in cross section whilst rotated through an angle of 13 degrees in top view producing challenging fabrication shop compound angle cuts up to 1500mm long, precisely at the 3D-CAD shading model derived 'saw-turn/saw tilt' angles.

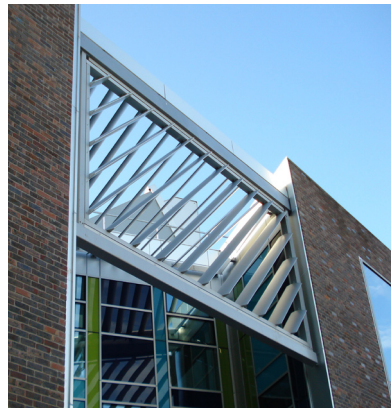
In addition Solinear also supplied 'Bespoke' trapezoidal shading 'fins' to the northlight roof glazing areas and slender, 4.0m long, natural anodised 'energy-shields' to the front elevation fitted back to the curtain walling system using

machined aluminium CW-01 glazing brackets suitable for connection to the curtain wall mullions.

South elevation shading was achieved using the Solex Linear horizontal shading system fixed directly back to facing brickwork via a rafter/tubular strut arrangement.

Aquarius XLINE-75 louvre screens and louvre door systems were supplied and installed to roof and ground level

◆ *'Light-POD' vertical shading structure HALO-400-65 solar blade*



Contract Particulars

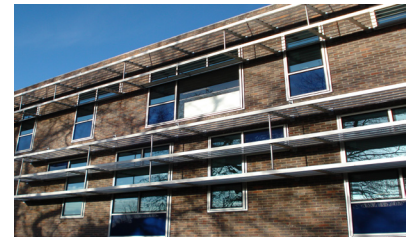
Value: £196,000

Contract Period: 16 weeks

Client: MGA Limited
Stourbridge
West Midlands

MC: Wates Construction
London

Date: April 2007



plantrooms with EPDM membranes and blanking panels fitted to reduce heat loss and minimise building air leakage.

Design calculations were prepared to the latest British Standard Code of Practice for structural use of Aluminium in Buildings.

This project was a challenge, successfully met by the Solinear through its use and application of latest 3D-CAD design software and CAD/CAM manufacturing facilities at its Doncaster factory along with the company's dedicated project management resources and the skills, commitment and diligence of its directly employed site fixing teams.

◆ *'Light-POD' horizontal roof shading structure HALO-400-65 solar blade*

Solinear Limited

Unit 9 Brunel Park Industrial Estate, Blyth Road, Harworth, Doncaster. DN11 8NE
Tel: 01302 759700 Fax: 01302 759711 email: mail@solinear.co.uk