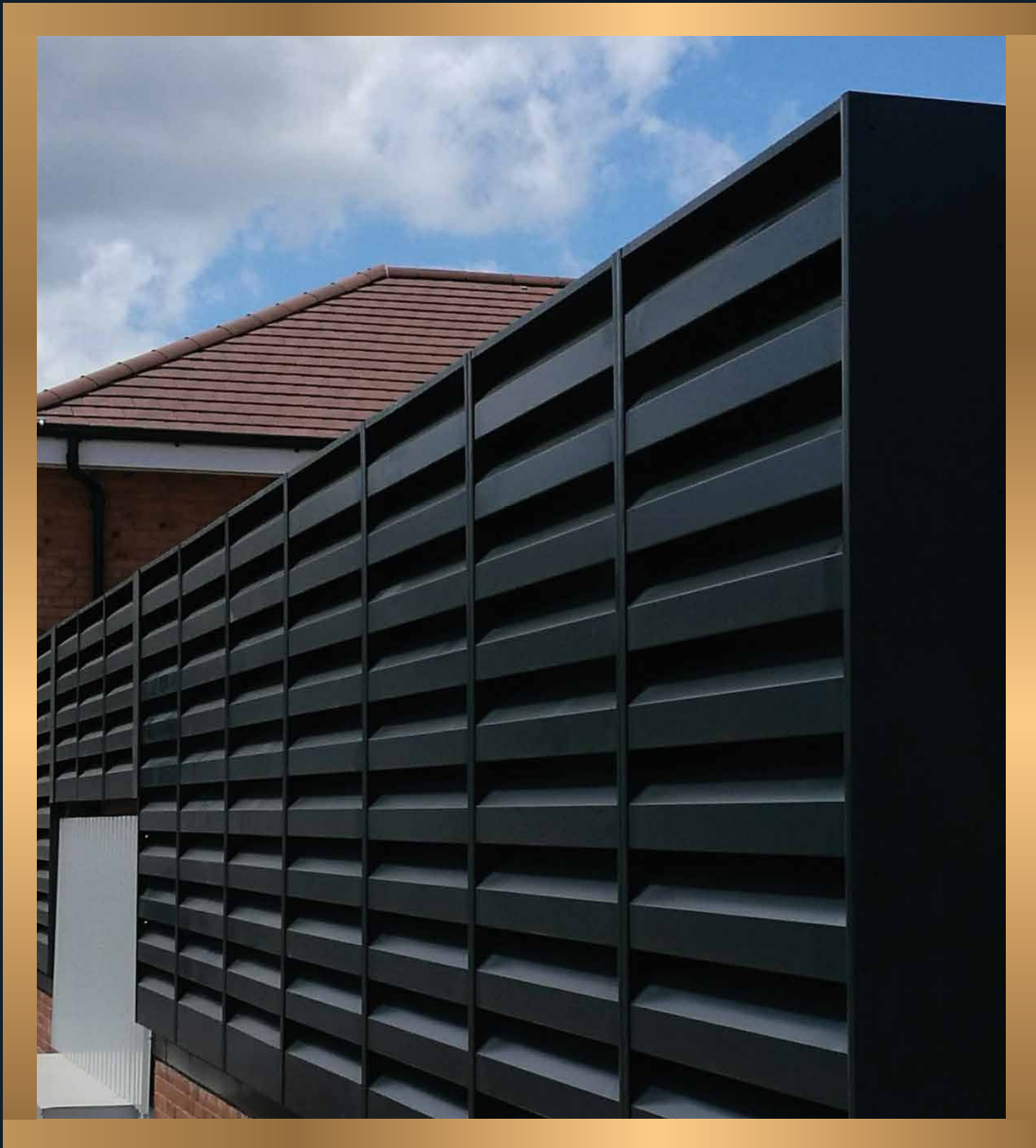




SOLINEAR

integration / imagination / innovation



SoundEX L300G Acoustic Louvres



# SOUNDEX L300G ACOUSTIC LOUVRES

For louvre screening and plantrooms where full ventilation is required through the louvre wall alongside acoustic performance, we are able to offer our SoundEX™ acoustic louvre range.

This product provides an aesthetic external visual appearance and enables a weathered louvre opening with sound insulation and airflow performance capabilities.

---

## Material Specification:

The louvre channel section casement sides and top/bottom surfaces along with the front face of the louvre blades are fabricated from pre-galvanised mild steel metal sheet. The underside of the louvre blades are fabricated from similar pre-galvanised perforated sheet. The void inside the louvre blades is filled with acoustic media and may also be supplied melonex lined (packed under 5% compression to eliminate voids due to settling).

An option of a galvanised and stainless steel wire birdguard or stainless steel or nylon insect screen is available for fitment to the back rear facing of the acoustic louvre module and is normally fixed using rivets/washers to louvre blades. The louvre is also available in Aluminium, Stainless Steel or Leathergrain plastisol or colour coat steel sheet.

Acoustic louvres can be fitted into clear finished structural builderswork, cladding or steelwork openings or can be mounted back to steel support structure to form plant/enclosure screens.

Louvres are supplied in modules usually 800mm, 1000mm or 1200mm wide with larger louvre areas are made up from multiple banks of louvre modules bolted together to form a louvre series.

Louvre heights of up to 3000mm can be supplied, louvre screens that are higher than this are supplied in modules. Where access is required louvres can be supplied as doorsets for inclusion in louvre screens or as stand-alone units.

## Colour/Finishes: and Louvre Arrangements:

- Self coloured material Galvanised, Mill finish Aluminium, Anodised Aluminium, Colour Coat, Polyester powder painted
- Single and double bank configurations are available for all acoustic louvres shown

### DESIGN



### MANUFACTURE



### INSTALL



# HOW WE WORK

## PROJECT MANAGEMENT

All projects are managed by fully qualified and experienced project managers, guaranteed by us to be responsible for the efficient and successful implementation of the product, manufacture and installation.

## DESIGN

We design all of our products using the very latest Autodesk Mechanical and Inventor 3D design software, allowing us to incorporate external details and supply our drawings and design documents in electronic DXF/DWG/DWF or PDF file format for easy collaboration, design reference and inclusion directly into your own CAD details or model.

## BIM

We are BIM level 2 compliant and as such BIM models of our products are available for download through our dedicated online library at [www.solbim.co.uk](http://www.solbim.co.uk).

## ADVANCED ANALYSIS

Sun path solar analysis can be carried out to support our solar shading proposals. Specialist computer software uses predictive ray casting technology to model the sun's paths and subsequently calculate the amount of sunlight penetrating the building façade after our solar shading system has been taken into account.

## INSTALLATION

To ensure your complete confidence in our projects we employ fully trained CITB registered installation engineers for each project. All associated installers will possess relevant CSCS documentation, IPAF and PASMA training. All site supervisors have SSSTS at minimum.





### Performance Data

The figures stated below are the free-field sound reduction of our L300G single bank acoustic louvre. The values stated is the difference, in decibels, between the sound pressure level on the noise source side of the louvre and that measured on the outside on the side of the louvre away from the noise source.

Model	Depth	Octave Band Centre Frequency (Hz)							
		63	125	250	500	1K	2K	4K	8K
L300G	300mm	12	13	16	18	24	24	20	19

ISSUE 2 | Q107 | NOV 2018



# SOLINEAR

integration / imagination / innovation

DESIGN



MANUFACTURE



INSTALL



01347 879 046 | [www.solinear.co.uk](http://www.solinear.co.uk) | [mail@solinear.co.uk](mailto:mail@solinear.co.uk)

**SOLEX**  
solar shading

**AQUARIUS**  
louvre systems

**MEDERA**  
timber systems

**SOUNDEX**  
acoustic systems