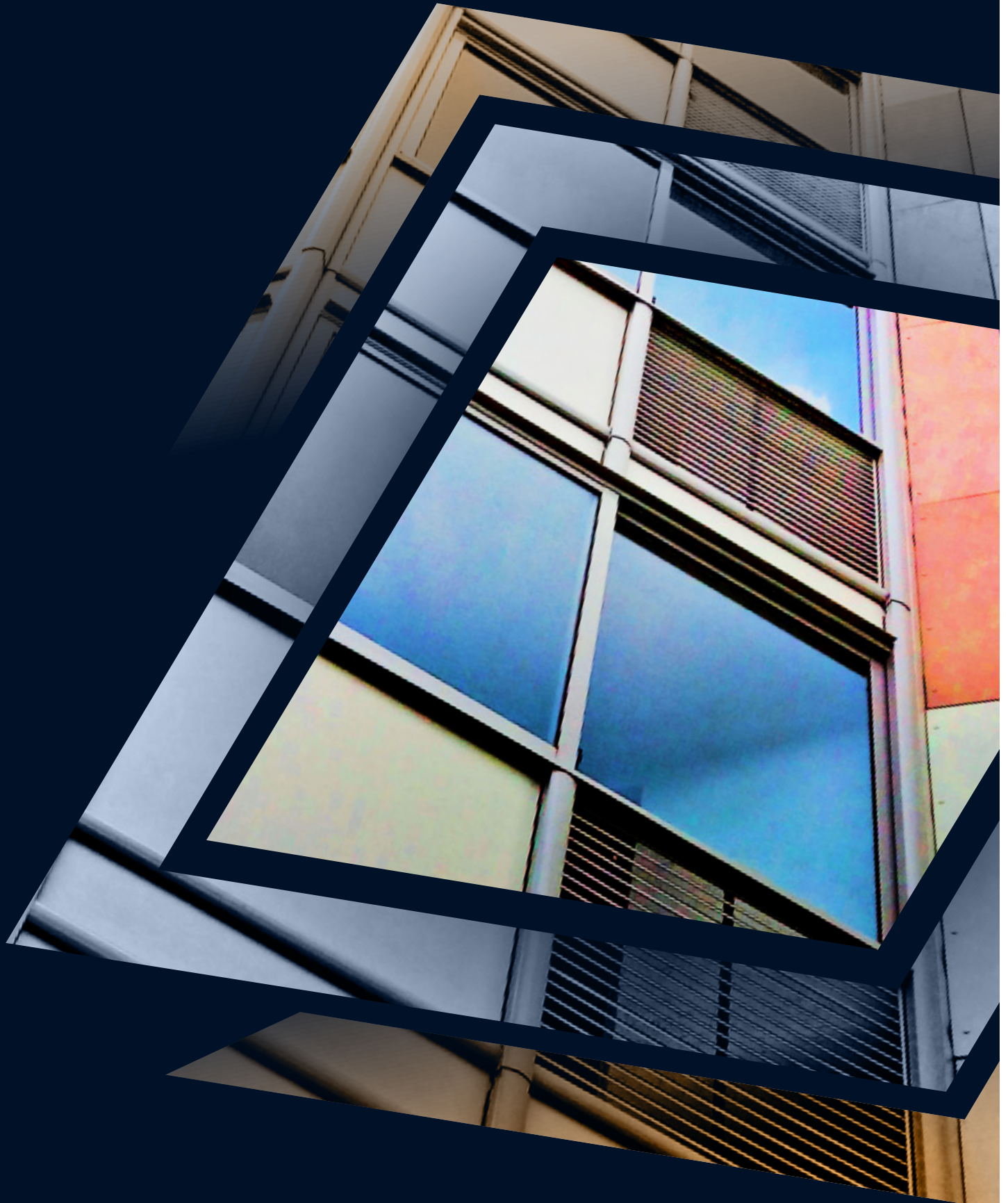




SOLINEAR

specialist architectural facade engineers



AQUARIUS™

AQ28 Aluminium Louvre Panels

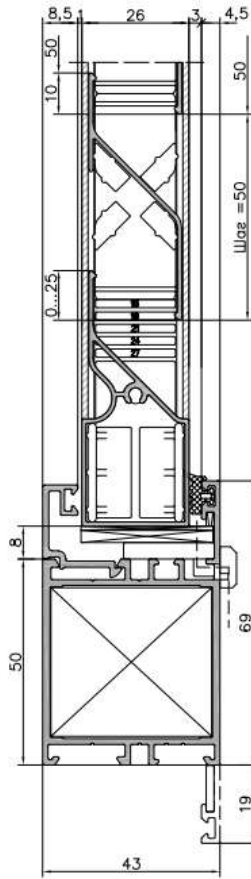
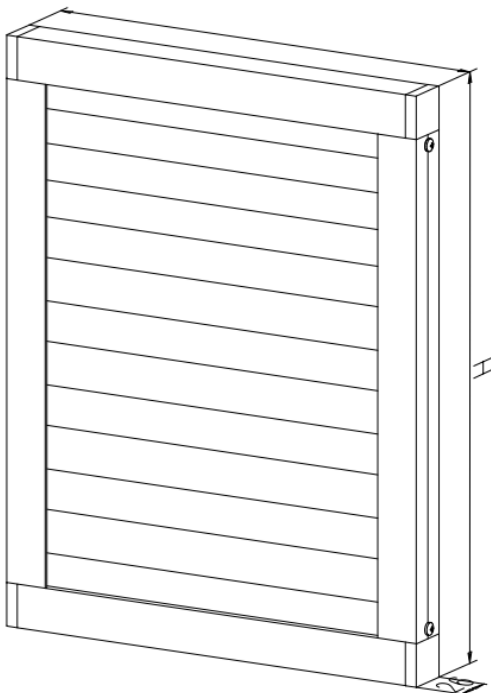
AQUARIUS™ AQ28

Aquarius™ louvre systems are manufactured from extruded aluminium to Solinear custom brand geometric design profiles, with inherent airflow and weather performance data and capability, available through testing and CFD software modelling to ensure correct and optimised system performance wherever used on the building façade. All Aquarius™ louvre systems are available with a range of standard perimeter flashings to ensure a full and complete weathered interface with the building structure.

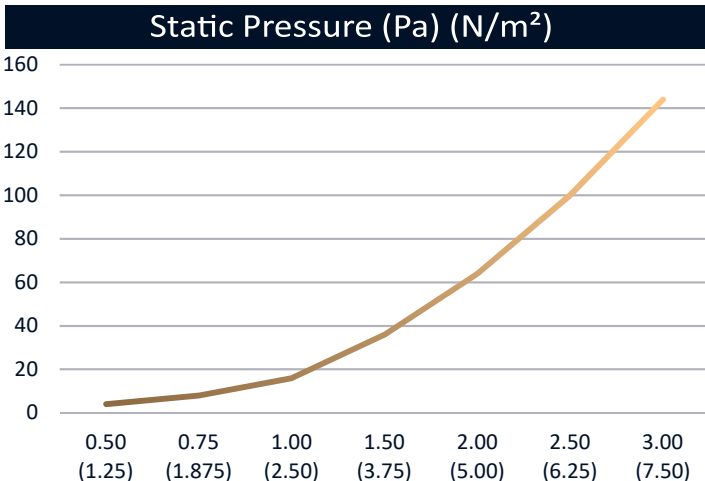
Suitable for for most circumstances and includes glazing or mechanical applications, AQ28 offers a wide range of options and good wethering protection.

- 50mm vertical pitch louvre, with blades fixed at a 45° angle.
- Designed to offer a neat and compact appearance with an architectural finish that is perfect for prestige projects.
- The louvre profile ensures it offers a good weathering resistance and a high free area of 40%.
- Its lightweight and thin profile makes it ideal for glazing applications, allowing it to fix directly into glazing channels.
- Also available with rear-fixing cleats and/or an external angle flange frame, suitable for fitting into ducts, plenum boxes or blockwork.
- Available in sizes from 100x100mm. Sizes above 1600x1600mm (in either direction) will consist of multiple panels with fixing angles allowing them to be bolted together (on site).

- Available with rear mounted birdscreen, insect mesh, PPC aluminium or insulated blanking panels.
- Glazing options: to suit 26, 28 or 32mm glazing thicknesses. Bespoke glazing sizes are available on request.
- Flanged Frame: supplied with an angle face flange, allowing fixing directly though the face into brickwork/blockwork behind.
- Channel Frame: supplied with rear mounted fixing cleats, mounted off the louvre frame, to facilitate screw fixing into adjacent timber, masonry or duct.
- Available in mill (unpainted), anodized or polyester powder coated finish



AQ28 Louvre System	AQ28
G28 – Glazed (26/28/32mm)	G28
F – Flanged	
C – Channel	
Size (mm w x h)	1000x1000
BG – Birdguard	IM
IM – Insect Mesh	
SBP – Standard Aluminium Blanking Panel	SBP
IBP – Insulated Blanking Panel (70mm PIR)	
Mill Finish	PPC RAL 7035
Anodized	
PPC Finish	
Quantity	5
For example, ordering code for a AQ28 louvre, to suit a 28mm glazing panel 1000x1000mm, complete with rear mounted insect mesh, PPC aluminium blanking panel and PPC finish to RAL 7035 = AQ28/G28/1000x1000/IM/SBP/RAL 7035/15	



When tested to BS EN 13030, the louvres achieve a 96.5% water rejection, based on a 0m/s intake velocity, at windspeeds of 13m/s (30mph) and rainfall of 75l/h.

Face Velocity (m/s)	Jet Velocity (m/s)	BSRIA Classification
0.00	0.00	B
0.50	1.25	B
1.00	2.50	B
1.50	3.75	C
2.00	5.00	D
2.50	6.25	D

Free Area	40%
Coefficient of Entry (Ce)	0.194
Coefficient of Discharge (Cd)	0.194

AQUARIUS RANGE

Solinear's AQUARIUS range has been designed to include an extensive range of fixed and operating louvre products suitable for installation into any structural or glazed opening within a building or as a free-standing structure to a roof plant area.

Generally employed as effective screening and/or means of natural ventilation, it is often used as a plant room louvre or installed where plantroom machinery requires simultaneous protection from the elements and ambiently controlled ventilation and/or there is a requirement for noise mitigation...

WANT TO KNOW MORE ABOUT OUR AQUARIUS RANGE?

Click [here](#) for our dedicated Aquarius products web page.

CASE STUDIES

Visit our [Aquarius case studies](#) web page for examples and download project PDFs.

SPECIFICATION ADVICE

Click [here](#) to view and download our NBS Specification Advice example.

HAVE ANY QUESTIONS?

Contact a member of our friendly team on the details below or visit our website for more information about Solinear and our products and services:

☎ 01347 879 046

✉ mail@solinear.co.uk

🌐 www.solinear.co.uk



WHAT WE OFFER



We offer a full Design, Manufacture and Installation service for our range of static and operable external solar shading systems. Manufactured from a range of materials including extruded aluminium, stainless steel, galvanised or mild steel and a range of timber species that provide a sustainable, cost effective and aesthetically pleasing addition to any structure.

PROJECT MANAGEMENT

All projects are managed by fully qualified and experienced project managers - guaranteed by Solinear to be responsible for the efficient and successful implementation of the product, manufacture and installation.

DESIGN

We design all of our products using the very latest Autodesk Mechanical and Inventor 3D design software. Thus allowing us to incorporate external details and supply our drawings and design documents in electronic DXF/DWG/ DWF or PDF file format for easy collaboration, design

reference and inclusion directly into your own CAD details or model.

BIM

Solinear is BIM level 2 compliant and as such BIM models of our products are available for download through our dedicated online library.



Click on the SOLBIM logo above to visit Solinear's free BIM library.

ADVANCED ANALYSIS

Sun path solar analysis can be carried out to support our solar shading

proposals. Specialist computer software uses predictive ray casting technology to model the sun's paths and subsequently calculate the amount of sunlight penetrating the building façade after our solar shading system has been taken into account.

INSTALLATION

To ensure your complete confidence in our projects we employ fully trained CITB registered installation engineers for each project. All associated installers will possess relevant CSCS documentation, IPAF and PASMA training. All site supervisors have SSSTS at minimum.



Constructionline Gold Member



Constructionline Silver Member





SOLINEAR
specialist architectural facade engineers